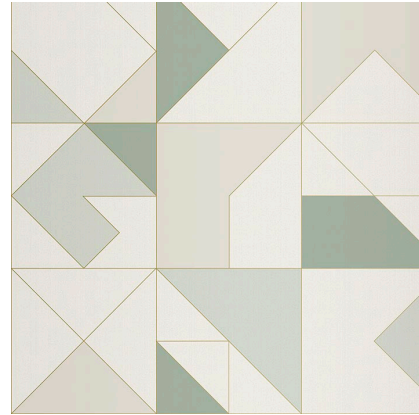


Model: SKINS PATTERN MONDRIAN TURQUOISE

Codes: 100307851

Group: G-201

Format: 53X1005CM



FEATURES



Roll format



The rolls should be installed so that the pattern at end of the roll matches the pattern at the beginning of the next roll, creating a mirror effect



Non woven paper



Very good color fastness to light



The adhesive must be applied on the support to be decorated (gluing the wall)



Allows for dry removal



S.E.W. The duration of the warranty is that provided by the European Standard Warranty.



Can be carefully cleaned with a damp cloth

ADDITIONAL NOTES

We recommend purchasing all the wallpaper you will need in the same order and production shade, since there will be slight changes in shade between the different dyes/lots.

DIMENSIONAL FEATURES

| | |
|-----------|---------|
| Width | 53 CM |
| Length | 1005 CM |
| Thickness | 259 µ |

LABORATORY TESTS

| | | |
|--|---------------|--------------------|
| Flammability | B-s1,d0 | EN 13501* |
| Formaldehyde emissions | <120 mg/kg | UNE-EN 15102:2019* |
| Migration of heavy metals and specific elements | PASS | UNE-EN 15102:2019* |
| Vinyl chloride monomer release | PASS | UNE-EN 15102:2019* |
| Content of specific hazardous substances | PASS | UNE-EN 15102:2019* |
| Perfluorooctane sulfonic acid (pfos) and its by-products | PASS | UNE-EN 15102:2019* |
| Weight | 147 G/M2 | EN ISO 536* |
| Permeability to 196 pa | 52.3 L/(M2*S) | ISO 9237* |
| Dry tensile md | 4671 N/M | ISO 1924-2* |
| Dry tensile cd | 2924.7 N/M | ISO 1924-2* |
| Elongation md | 5.2 % | ISO 1924-2* |
| Elongation cd | 12.2 % | ISO 1924-2* |



PACKING

| | | |
|------------------------|-----------------|--|
| Sales units per box | 63.918 M2/BOX | |
| Sales units per pallet | 1917.54 M2/PAL | |
| Sales units per unit | 5.3265 M2/PIECE | |
| Net weight | 0.150192 KG/M2 | |
| Sale unit | M2 | |
| Base unit | ST | |
| Gross weight | 0.168966 KG/M2 | |

